

# JETMASTER®

## DIRECT PRINT PHOTO PANEL

### Design - Print - Display

Create effortless impact for your images. A lightweight alternative to solid MDF display blocks, this photo display frame can be printed directly on a UV flatbed printer; just position, print and display. The printable surface is finished in a bright white colour, no need to print white first, available in a range of sizes with a smart black matte edge finish.

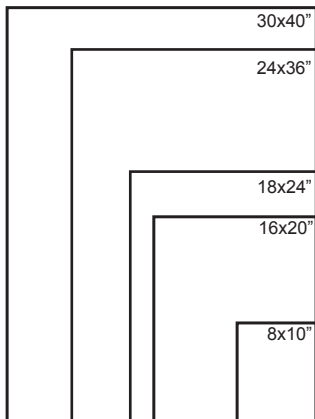
#### Applications:

- Permanent interior signage
- High impact advertising
- POS display and trade show graphics

#### General Specifications:

- Direct UV printable
- Thickness: 1 inch
- Lightweight
- Pre drilled holes on back for easy hanging

Size (Inches)	Printer Type	Depth		Quantity per box
		mm	inches	
8x10	UV Flat Bed / UV Hybrid	25	1	10
16x20	UV Flat Bed / UV Hybrid	25	1	8
18x24	UV Flat Bed / UV Hybrid	25	1	8
24x36	UV Flat Bed / UV Hybrid	25	1	5
30x40	UV Flat Bed / UV Hybrid	25	1	5



#### Printer Compatibility:

- ✓ Swiss Qprint Nayla
- ✓ Jetrix 2030
- ✓ Océ
- ✓ EFI/Vutek
- ✓ FujiFilm
- ✓ Scitex
- ✓ Mimaki
- ✓ Agfa
- ✓ Gandy

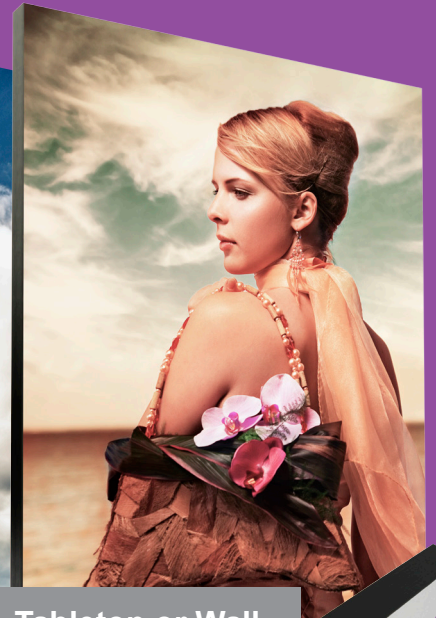
**JETMASTER®**  
Image Display Systems



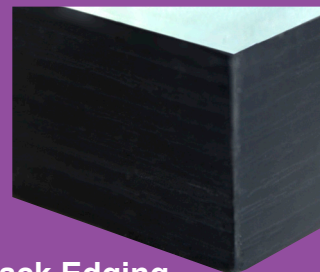
The JetMaster Image Display Systems Range is manufactured and distributed by Innova Art. For more information about Innova and their range of digital media visit [www.innovaart.com](http://www.innovaart.com)



Print Direct From  
A UV Flatbed  
Printer



Tabletop or Wall  
Mounted



Black Edging



JetMaster Direct Print Photo Panel Available From:

[www.jetmaster-systems.com](http://www.jetmaster-systems.com)

+44 (0) 1992 571775 | [info@jetmaster-systems.com](mailto:info@jetmaster-systems.com) | +1 856-456-3200